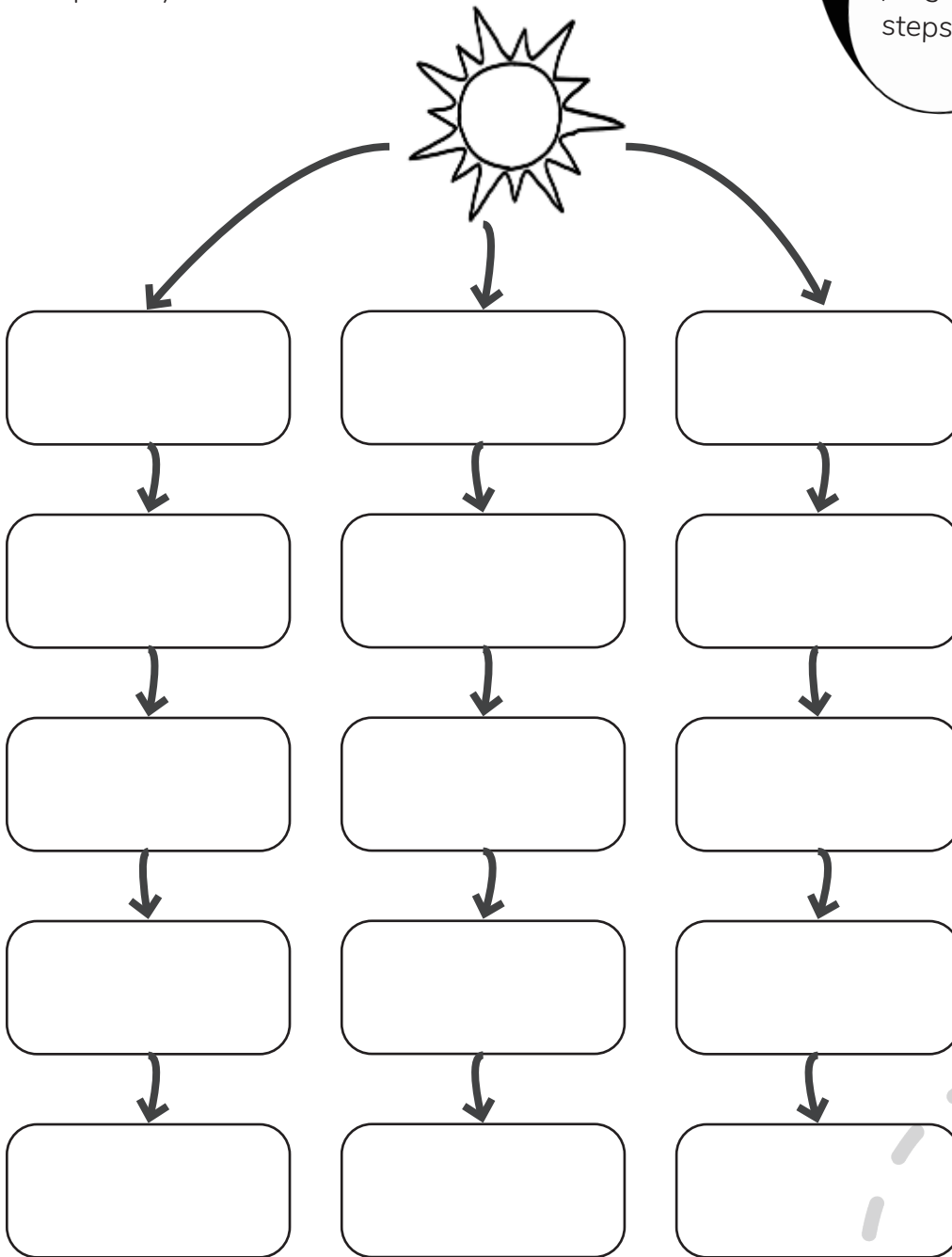
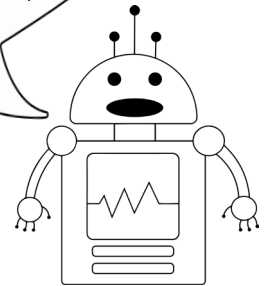


Food Chain

This activity was created by Olivia

Let's see whether you can track energy flow in your own environment! Go outside and observe your surroundings. When you see an animal, like a bird, ant or squirrel, add them to the food chain in the place where you think they fit best. Fill in the rest based on what that animal eats (or what eats it)! Eg. A tree gets energy directly from the sun, and is a "producer". Caterpillars eat tree leaves to get energy, so they are "primary consumers".

Just like a computer program, the food chain must follow a specific sequence in order to work. The caterpillar can't get its energy straight from the sun just like a computer program can't skip steps.



PRODUCERS: Things that use the sun's energy to make their own food energy.

PRIMARY CONSUMERS: Eat producers to get energy. Herbivores or omnivores.

SECONDARY CONSUMERS: Eat primary consumers. Omnivores or carnivores.

TERTIARY CONSUMERS: Eat secondary consumers for energy. Usually carnivores.

APEX PREDATORS: Top of the food chain. When they die, their bodies decompose and energy returns to the first level.