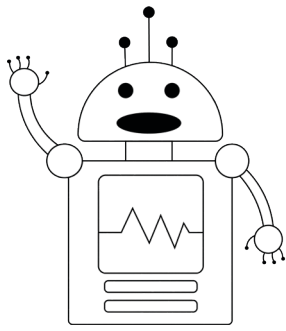


Home Terrarium

This activity was created by Katy.



Esiw wants to learn more about plants and how to keep them healthy and alive! But before we can help Esiw, we have to learn for ourselves about terrariums. A terrarium is a tiny indoor greenhouse that can be open or closed to the environment. Open terrariums have an opening at the top, and need to be watered regularly. Closed terrariums have a lid, such as a jar, and the moisture stays inside the container. Closed terrariums do not need to be watered.

Esiw needs someone to teach them how to keep plants healthy and alive in a terrarium because robots do not have their own creativity like humans. When we give a robot information and teach them something new it's called machine learning. Can you complete the following steps to make your own terrarium and then answer the questions below to help Esiw identify different types of plants and how to care for a terrarium?

Terrariums have plants, soil, and sometimes moss inside. Remember, plants need sunlight to make energy through photosynthesis. They also need water to stay hydrated, and soil to get nutrients. To make your own terrarium you will need the supplies listed below!

Supplies

- Clear glass or plastic container
- Soil
- Spoon or small shovel
- Small plants
- Rocks
- Optional: Moss, rocks, sand or seashells for decoration

STEP 1

Put a couple rocks in the bottom of your container to prevent the plant roots from getting too much water.

STEP 2

Add approximately 10 cm of soil to the bottom of your container.



Date: _____

Name: _____

STEP 3

Place plants, moss, and all living things in the soil.



STEP 4

Add rocks, shells, and any non-living things for decoration. Get creative and make it look beautiful!



STEP 5

Water the plants so their roots get wet, and spray the inside of the terrarium for moisture.



Take good care of your terrarium by spraying the plants with water every couple of days, and watering the plant roots once a week. Water will evaporate in the air, so we need to replenish the moisture within the terrarium if it is open to the atmosphere. Put your terrarium in a window, sunny place, or under a plant light so the plants can get energy from the sun, and watch your terrarium grow!

Answer the following questions to teach Esiw how to identify different plants and what care they need!

What type of plants are in your terrarium? _____

Is there moss in your terrarium? _____

What do the plants in your terrarium need to stay healthy? _____

Is your terrarium open to the atmosphere like the one above? _____

Does your terrarium need to be watered? Remember, open terrariums need to be watered, and closed terrariums already have water inside. _____