

Debugging the Digestive System (Part 1)

This activity was created by Zoe.

Using the word bank at the bottom of this page, fill in the blanks of the code on Page 21 to help Esiw with processing food in the digestive system. To help you out, look at the example below for how the code might look.

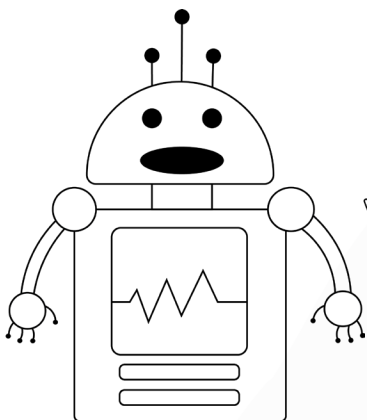
EXAMPLE

```
Line 1: Food1 = cooked chicken;
Line 2: Food2 = uncooked chicken;
Line 3: Mouth = eats food;
Line 4: if Mouth and Food1:
Line 5:     Stomach = not upset
Line 6:     else:
Line 7:         Stomach = upset;
```

This sample code represents what happens to your stomach if you eat raw versus cooked food. Lines 1, 2 and 3 are **variables** representing specific things. The **variable Food1** represents cooked food, the variable **Food2** represents uncooked food, and the variable **Mouth** represents eating the food. Lines 4 and 5 are saying that if your **Mouth** eats cooked chicken, your **Stomach** will not react. Lines 6 and 7 are saying that if you eat uncooked chicken, your **Stomach** will become upset.

WORD BANK

broken down into a liquid mixture	Esophagus	broken down	Small_Intestine
not broken down	waste disposed of	separated into nutrients and waste	Stomach



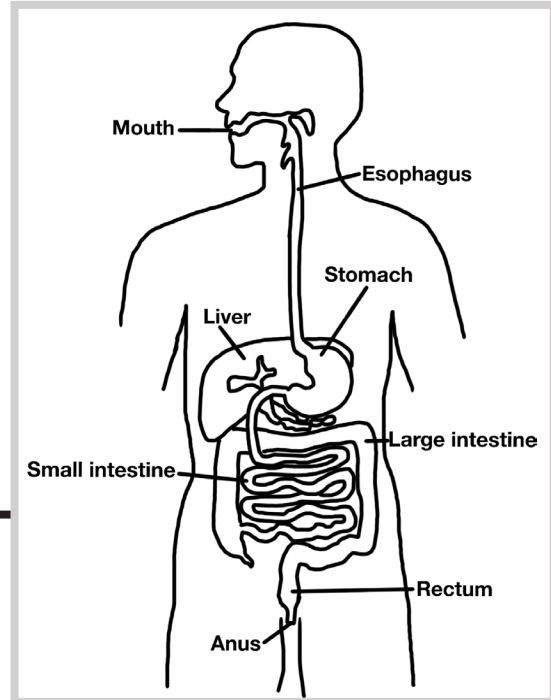
Hi! Esiw here! In this activity, keep an eye out for conditional statements (like the one in the example above!). It may sound scary, but conditional statements here are whenever you see the word *if* in the code. This tells us that *if* something happens (like the **Mouth** eats cooked chicken), then the instructions below will happen (the **Stomach** is not upset)!

This activity continues on the next page!

SLO : 5-1-06

Debugging the Digestive System (Part 2)

Hint:
Lines 1-7 are all **variables!** Variables are like placeholders for other info. Learn more about them on page 7!



DIGESTIVE SYSTEM CODE

```

Line 1: Food = apple;
Line 2: Teeth = chew Food;
Line 3: Esophagus = pathway for Food;
Line 4: Stomach = Food travels here from Esophagus;
Line 5: Small_Intestine = Food travels here from Stomach;
Line 6: Liver = separates nutrients from waste;
Line 7: Large_Intestine = waste travels through here;
Line 8: if Teeth and Food:
Line 9:     Food = _____;
Line 10: else:
Line 11:     Food = _____;
Line 12: if Food and _____:
Line 13:     Food = moves down to stomach;
Line 14: if Food and Stomach:
Line 15:     Food = _____;
Line 16: if Food and _____:
Line 17:     Food = broken down further and nutrients absorbed;
Line 18: if Food and Liver:
Line 19:     Food = _____;
Line 20: if Food and Large_Intestine:
Line 21:     Food = _____;
  
```