

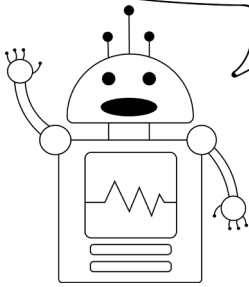
Date: _____

Name: _____

Erosion and Deposition in Our Communities

This activity was created by Robyn.

Below you will find a list of erosional land forms and a list of depositional land forms along with a number in its binary form. The binary number represents how many points the landform is worth. The rarer the landform, the higher the amount of points. Go out into your community and see if you can find any of these landforms. Once you have looked and found all the landforms you can, refer to the bottom of the page to learn how to convert binary to the number system we are used to (base ten) and add your points.



DEFINITIONS

EROSIONAL LANDFORM: Landforms that are created by erosion or gradual destruction.

DEPOSITIONAL LANDFORM: Landforms that are created through deposition or the buildup of sediment or rocks.

- Ditch – **001**
- Lake bay – **010**
- Large rock that looks like over time it was cut by waves – **100**
- Beach – **101**
- Twisty river – **011**
- Meandering stream – **100**
- Sand bar in a lake or river – **101**
- A large valley – **011**
- Glacier - **101**
- Rock with small hole or depression due to water droplets – **101**
- Pothole on your street – **001**
- Build-up of soil at the bottom of a hill – **100**
- Storm water runoff – **011**
- A structure in your community to reduce the effects of either erosion or deposition (eg. increased vegetation, supports on river banks) - **101**

BINARY	BASE 10
000	0
001	1
010	2
011	3
100	4
101	5

TOTAL POINTS