

Date: _____

Name: _____

Connect the Dots

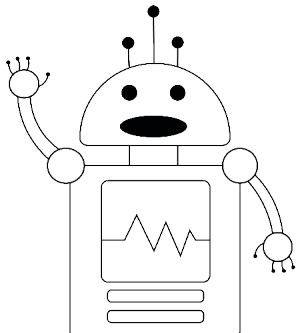
This activity was created by Sophia.

Follow the numbers and connect the dots on the next page to reveal an image of the Greek Parthenon.

The Parthenon was built from 447 to 432 B.C. making it almost 2500 years old! It remains standing after so long because it has a very strong structure and the builders used shapes that can hold a lot of weight. One of the most prominent features of the Parthenon is its many columns. While columns were a common defining design of ancient Greece, they're also structurally strong. When a weight is applied to a column, it distributes the weight from the upper parts downward to the lower parts of the structure and eventually to its foundation. Since columns are continuous shapes there aren't many places where it can easily break.

The top of the Parthenon is triangular. Triangles are also a common structural shape because they can withstand a lot of weight. Their shape can't be changed easily, making them very strong.

Did you know, connect the dots is like a computer science element called a linked list. In a linked list, is a collection of data elements that must follow a specific order. Each Element directs the code to the next element similar to how one number leads to the next in a connect the dots picture.



Date: _____

Name: _____

