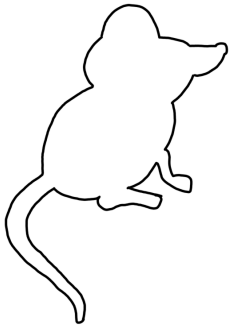


Prairie Food Web

This activity was created by Sophia

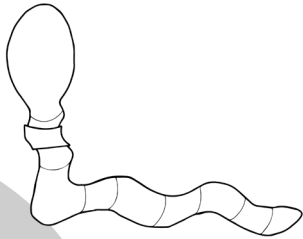
Food webs help to visually explain the connections between organisms in their habitat. The diagram on the next page is an example of a food web. The arrows represent an exchange of energy. Energy gets transferred from the sun, to producers, to each animal that consumes another. Overall, the energy flows from prey to predator.

Using the information given below, figure out which of the following animals go into each box on the next page.



Grasshopper is a herbivore who only eats plants, like grass. Grasshoppers have to watch out for predators like birds, beetles, and mice!

Mouse is an omnivore and munches on things like seeds, grass, worms, and fruit. A mouse should beware of snakes, birds, and coyotes, which all might want to eat it up!



Rabbit is a herbivore who nibbles on plants like grass, leaves, and twigs. Rabbits can be dinner for animals like large birds and coyotes.

Worm is an omnivore who feasts on dead plant and animal material. Worms can be gobbled up by birds and mice.

Coyote is a carnivore who snacks on small animals like rabbits, and some larger animals too. Coyotes are lucky because there aren't many animals in the prairie food chain that eat them!



Prairie Chicken is an omnivore who pecks at insects, grains, and weeds. Chickens are delicious food for large birds and coyotes.

Bison is a herbivore who is happy eating grasses. Bison are also tasty to animals like coyotes.

Grass isn't even an animal, but it needs food too! Grass gets its food from the energy of the sun. Grass feeds animals like bison, mice, and rabbits.

DEFINITIONS

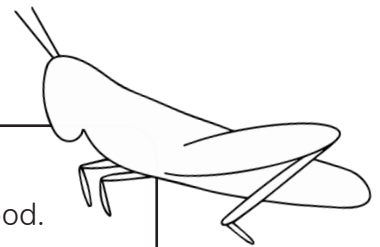
PRODUCERS: Organisms that use the sun's energy to make their own food.

PRIMARY CONSUMERS: Organisms that eat producers for energy.

SECONDARY CONSUMERS: Organisms that eat primary consumers for energy.

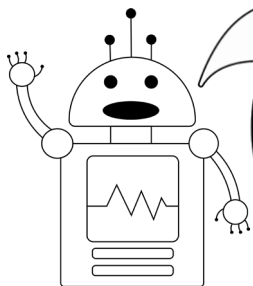
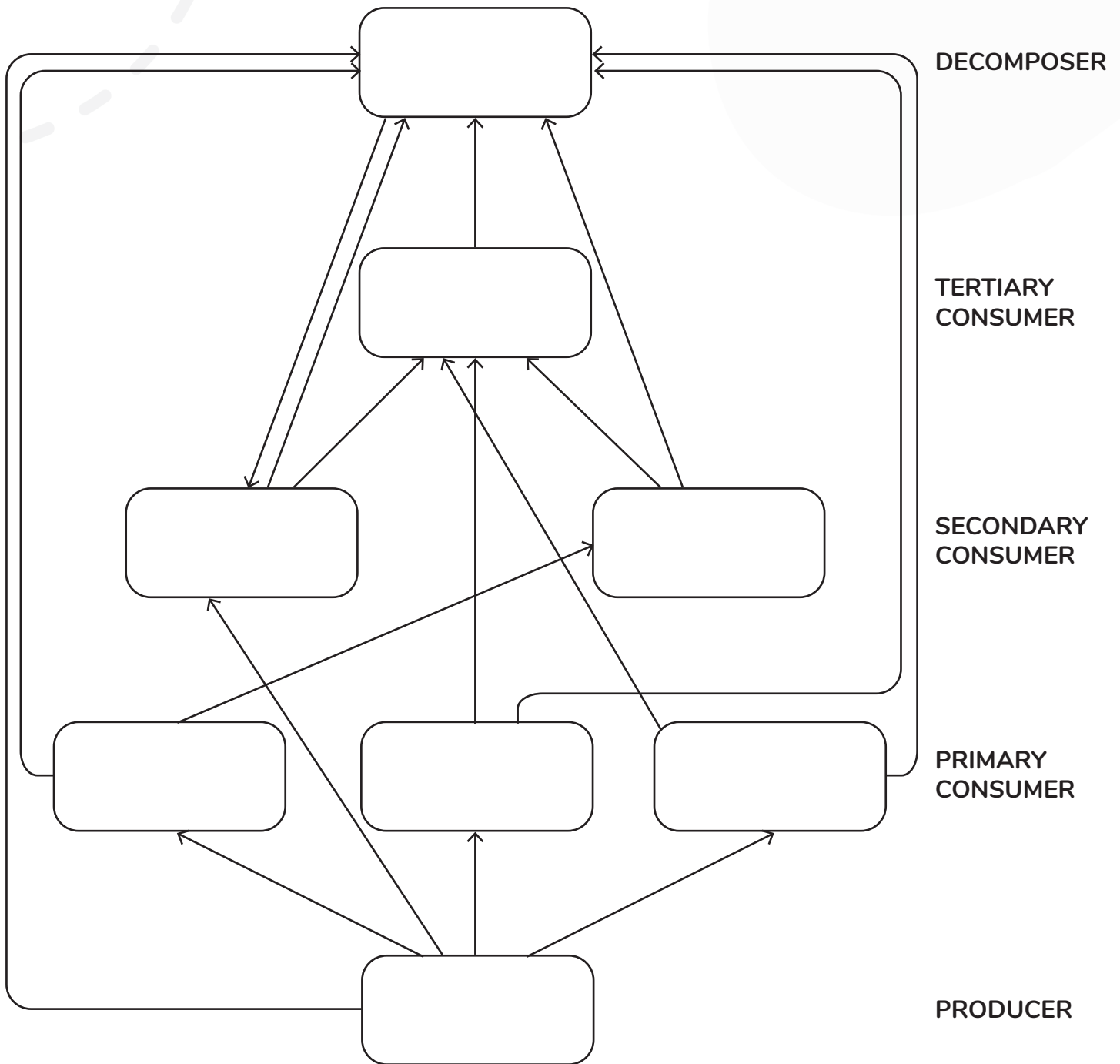
TERTIARY CONSUMERS: Organisms that eat secondary consumers for energy.

DECOMPOSERS: Organisms that feed on dead organisms or waste.



Date: _____

Name: _____



This food web is like a **“program”** of how energy is transferred in a habitat. To complete the program, you are making use of **variables**. A variable is like an empty box with a label. Your job is to fill the box with something that fits the label! In our activity, you can think of words like “decomposer” or “primary consumer” as the labels, and things like “worm” or “chicken” as the specific instances of that variable (the things you put inside the box).