

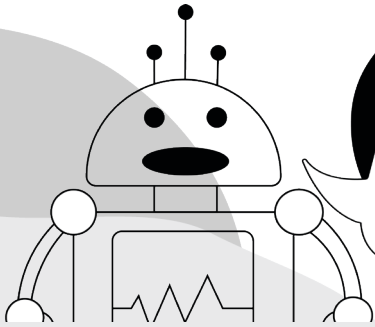
Date: _____

Name: _____

Movie Mayhem! (Part 1)

This activity was created by Brandi.

In many popular movies, we see animals and plants in nature doing crazy cool things! But how much is real and how much is imaginary? In this activity, take your best guess if you think something from a movie is fact or fiction!



Let's use a computer language called **binary** for this one! There are only two options in binary: **1** or **0** (like yes or no). If something is a fact, circle 1, and if something is fiction, circle 0. Since I am a machine, I understand binary better than English!

EXAMPLE: The Secret Life of Pets

The Secret Life of Pets shows us that animals can talk to each other in English or French! **Can they speak human languages like English or French in real life?**

1

0

SCENARIO 1: Finding Nemo

In Finding Nemo, Nemo and his father are clownfish that live in an anemone which stings animals that pass by. **Do you think clownfish live in sea anemones?**

1

0



SCENARIO 2: Tangled

In Tangled, a golden flower gives Rapunzel magical hair that can heal wounds. **Are there actually healing properties in certain flowers?**

1

0

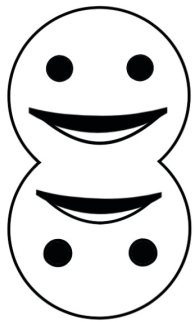
Movie Mayhem! (Part 2)

SCENARIO 3: Wreck-it Ralph

In Wreck-It Ralph, Ralph meets Vanellope von Schweetz, who is a “glitch” from a racing game. A glitch is a computer error. *Can glitches happen on real computers?*

1

0



SCENARIO 4: Inside Out

In Inside Out, emotions Joy, Sadness, Anger, Disgust, and Fear control the feelings and actions of young Riley. *Do you think emotions can control what we do?*

1

0

SCENARIO 5: Frozen

In Frozen, Elsa learns about her power to move ice and snow, accidentally putting her kingdom in an eternal winter. *Can humans control the weather?*

1

0



SCENARIO 6: How to Train Your Dragon

In How to Train Your Dragon, Hiccup breaks the tradition of fighting dragons and befriends a Night Fury dragon. *Do you think dragons exist or ever existed?*

1

0