

Date: \_\_\_\_\_

Name: \_\_\_\_\_

## Habitats Across the World

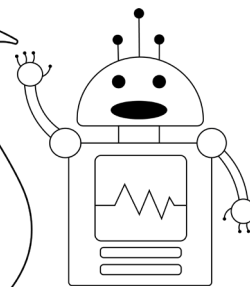
This activity was created by Gagan

Each of these animals belongs to a habitat where it can live comfortably (with a different climate, and among plants and other animals that suit its needs).

Can you match each animal to its home? Cut and glue each animal onto the map on the next page. Each of these creatures has a helpful hint on the back of this page!



Remember **variables** from "Code an Animal"? What are the variables we are working with here, and what are some instances of those variables?



Can smell their food under snow and eat moss, herbs, and twigs

Can be found hanging out in trees in the Amazon forest

Live along rivers/streams in meadows, woodlands and forests

Chew grass, can't last long without water, and continually clean their fur

Found in Africa, these animals eat mostly leaves, grass, and herbs

Go long periods without water and eat plants and grasses

Chew mostly on bamboo and live in trees and caves

Eye-lashes protect them from sand & can live 6-months with no food/water

World's biggest cat, good swimmers, like forests, and tall grass jungles

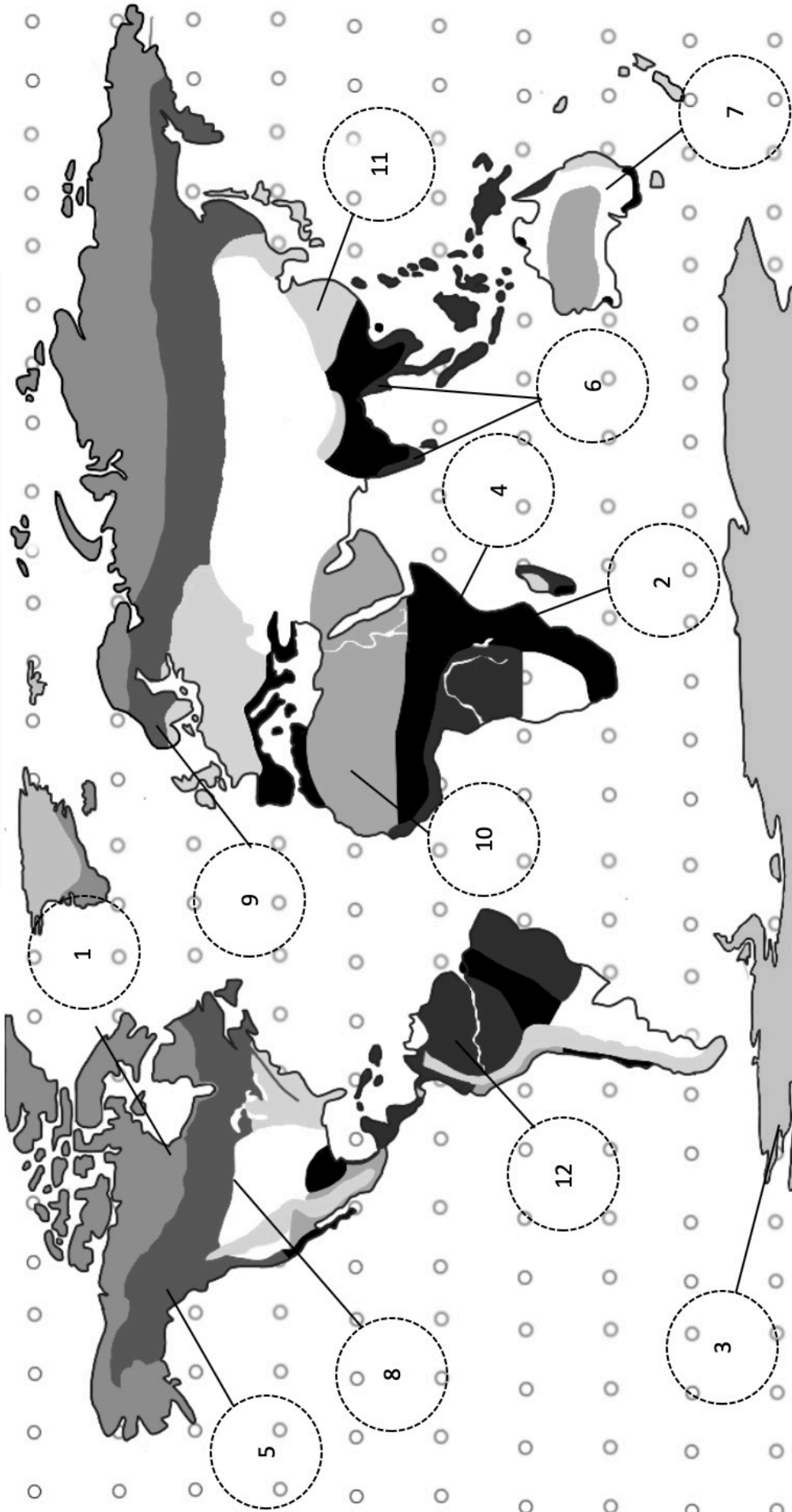
These furry creatures are adapted well to cold climates and hunt on ice

In the deep south these animals store fat to adapt to the cold climate

Rest up to 20 hours to save energy and to escape the hot weather

Date: \_\_\_\_\_

Name: \_\_\_\_\_



○ **Ocean:** saltwater, regulates Earth's climate

□ **Grassland:** mild rain, dry climate, grasses

■ **Temperate Forest:** dry, cool climate, many trees

■ **Ice**

■ **Desert:** dry, little rain, cool nights, small plants

■ **Polar:** ice / snow, cold, little rain, small plants (moss, shrubs)

■ **Taiga/Boreal Forest:** lakes / rivers, wetlands, mountains, trees

■ **Rain Forest:** warm, wet, many plants (vines, leaves), tall trees

■ **Savanna/Tropical Grassland:** little rain, grasses, shrubs, few trees