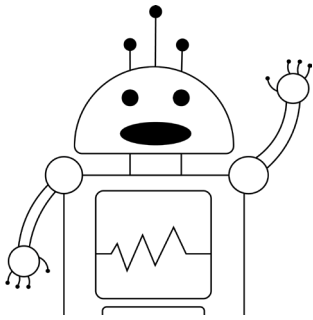


Date: _____

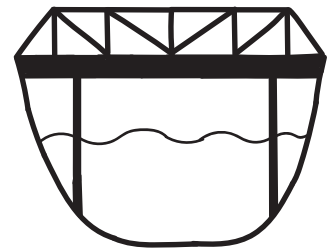
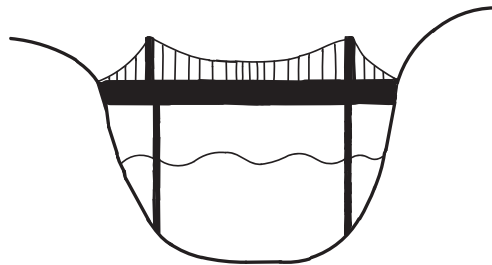
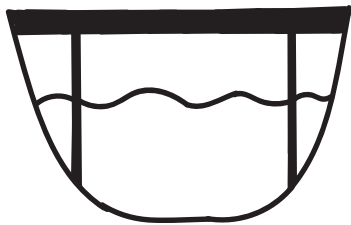
Name: _____

The Engineer's Bridge Building Code

This activity was created by Habiba.



Let's look more into how to build a bridge using code! Fill in the blanks below to complete the code that will predict the structure of a bridge based on the description.



A_bridge = "A structure that allows people and vehicles to cross over an open space, like a body of water or deep pits";

Bridge_structures = ["Truss Bridge","Suspension Bridge","Beam Bridge"];

If the_bridge_shape == "A horizontal beam with supports on each ends";

The_bridge_structure == " _____ "

If the_bridge_shape == "A beam with triangular supports at the top making it one of the strongest bridge supports";

The_bridge_structure == " _____ "

If the_bridge_shape == "A base that hangs from strong wires called cables that allow it to extend longer distances than any other type of bridge";

The_bridge_structure == " _____ "