

Date: _____

Name: _____

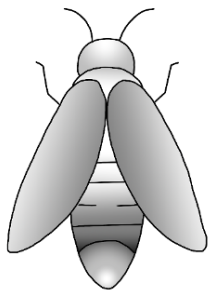
Natural or Artificial Light

This activity was created by Amaris

NATURAL LIGHT is light that is produced without human involvement; we have no control over the amount, duration, or intensity of natural light. The main type of natural light is sunlight, which is essential to our life here on Earth (plants use sunlight for photosynthesis, which makes some of the oxygen that we breathe, and also makes food for all organisms on the food chain). Some living organisms (for example, glow worms) can also produce their own natural light, called bioluminescence.

ARTIFICIAL LIGHT is made with human inventions / human involvement, and usually requires a source of energy such as electricity or a battery to produce it. Artificial light is different from natural light because humans can control the quality, quantity, duration and intensity. It is often used when the sun, a natural light source, is not shining.

Which of these light sources would you call “natural” sources, and which would you call “artificial”? In the box below each item, put an A for artificial or an N for natural.



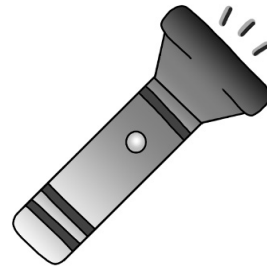
Firefly



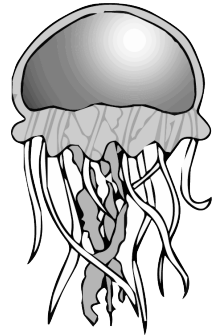
Candle



Fire



Flashlight



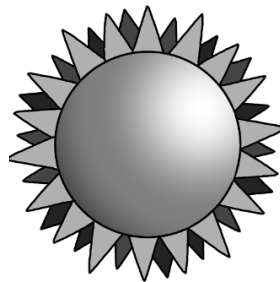
Jellyfish



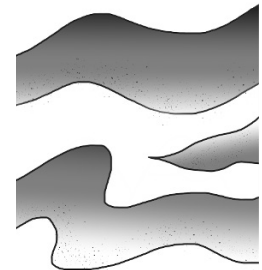
Lightning



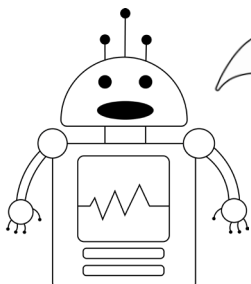
Lightbulb



Sun



Aurora Borealis



Hey everyone, it's me, Esiw again! In computer language, saying “yes” and “no” is very similar to turning a light switch on and off. It's called **binary**. In binary, the number 1 means yes, (or on) and the number 0 means no (or off). On the next page, let's use binary to turn lights on or off.