

Date: _____

Name: _____

Classification Station

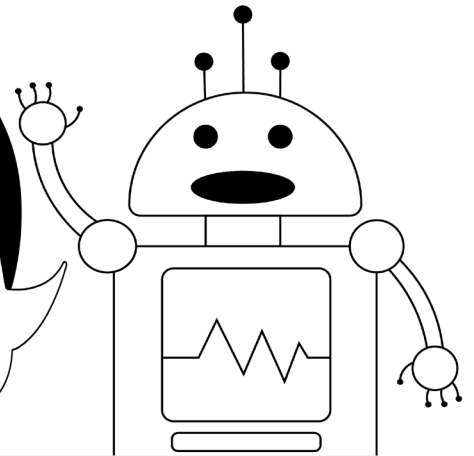
This activity was created by Robyn.

In our everyday lives we use and see different classification systems everywhere we go. Classification systems are systems in which items, number words and more are sorted.

I use classification systems all of the time in my code! Order is really important to me and all of coding! Some examples of classification systems in our daily lives are :

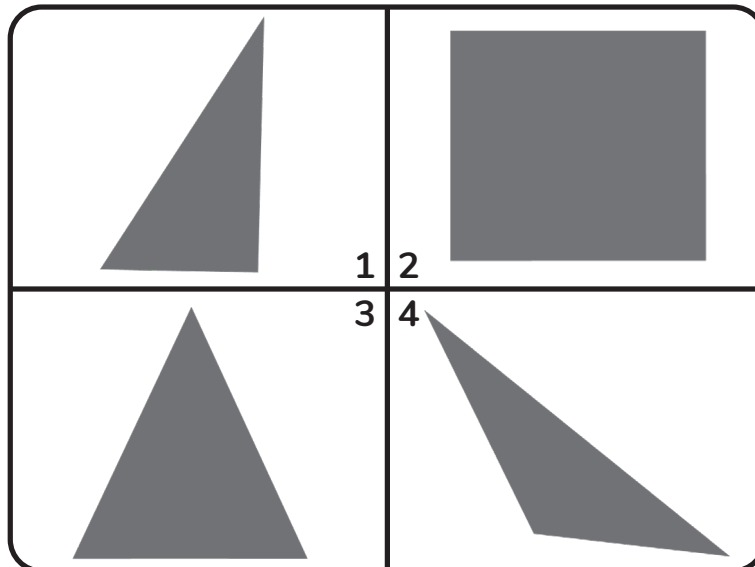
- Phone numbers in a contact list
- Library books
- Groceries in a market

Groceries? That seems odd, but when you think about it, that makes sense. You wouldn't want to keep the bread on a shelf beside the ice cream! That would not work! You'd either have melted ice cream or frozen bread! So classifying them as frozen or non frozen is essential!

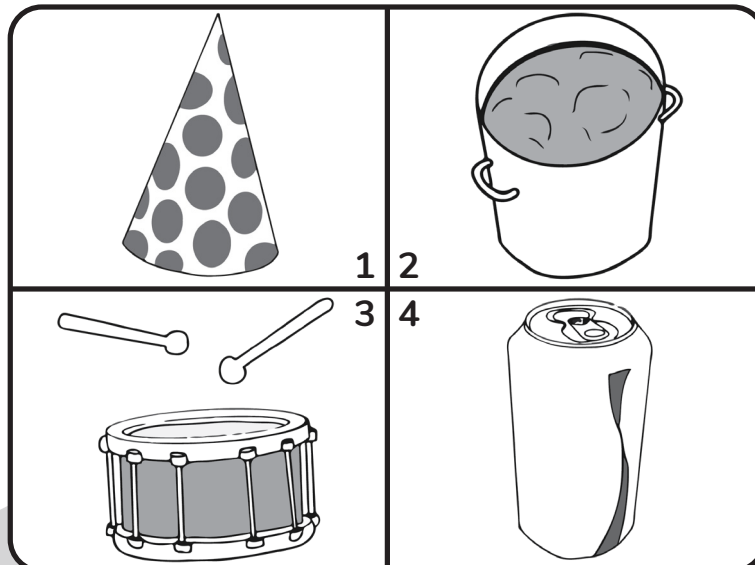


Keeping classification systems in mind, can you figure out what image doesn't belong in the following sets? What seems to be out of place and why?

CLASSIFICATION SYSTEM 1



CLASSIFICATION SYSTEM 2




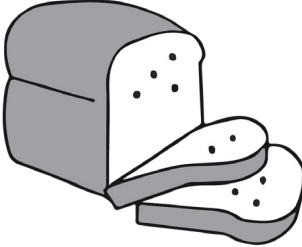


Date: _____

Name: _____

CLASSIFICATION SYSTEM 3

| | |
|------------|-----------|
| 14 | 84 |
| 1 2 | 3 4 |
| 147 | 93 |

CLASSIFICATION SYSTEM 4

| | |
|---|--|
|  |  |
| 1 2 | 3 4 |
|  |  |

CLASSIFICATION SYSTEM 5

| | |
|-------------|--------------|
| 11 | 1110 |
| 1 2 | 3 4 |
| 1101 | 10011 |