

Answer Key

Sorting Food (page 3-6)

Fruit + Vegetables : avacado, brocoli, carrot, lettuce, strawberry, watermelon

Grains : bread, cereal, pasta

Milk and derivatives : cheese, milk, yougurt

Fats, Oils and Sweets : chocolate, donut, lolipop

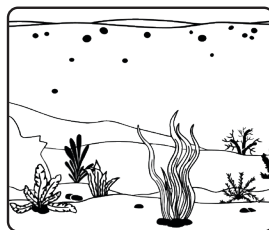
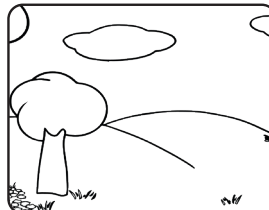
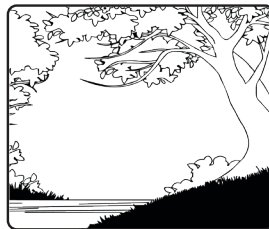
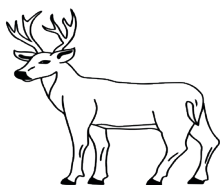
Decode the Animals (page 8-9)

- | | | | | | |
|---------|----------|----------------|--------------|------------|----------|
| 1. lamb | 2. sheep | 3. caterpillar | 4. butterfly | 5. tadpole | 6. frog |
| 7. pup | 8. shark | 9. chick | 10. chicken | 11. cygnet | 12. swan |

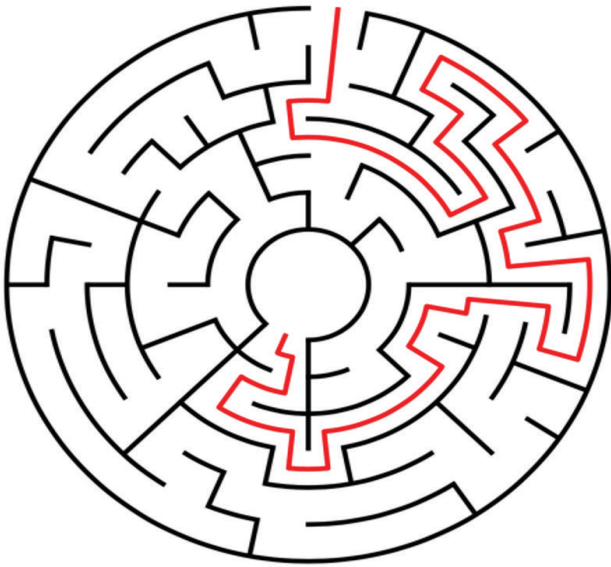
Things That Change and Things That Do Not (page)

Traits That Are Variable	Traits That Are Constant
<ul style="list-style-type: none">• Hair Length• Height• Shoe Size• Hair Colour	<ul style="list-style-type: none">• Eye Colour• Number of Fingers

Matching Habitats (page 17)



Help Save the Beaver (pages 13-14)



Which Cycle is Which (page 13)

